

3 November 2020

ADVISORY ON CONTACT TRACING DEVICES: CURRENT VERSION OF BLUEPASS TOKENS ARE NOT INTRINSICALLY-SAFE

1. The Assurance, Care and Engagement (ACE) Group announced on 16 October 2020 that government agencies will be distributing more than 450,000 contact tracing devices (BluePass tokens) to all migrant and local workers living or working in dormitories, as well as those¹ in the Construction, Marine Shipyard and Process sectors.
2. The BluePass token (see diagram below) is waterproof, and has a form factor which will enable workers to keep it on more naturally while in the dorms.

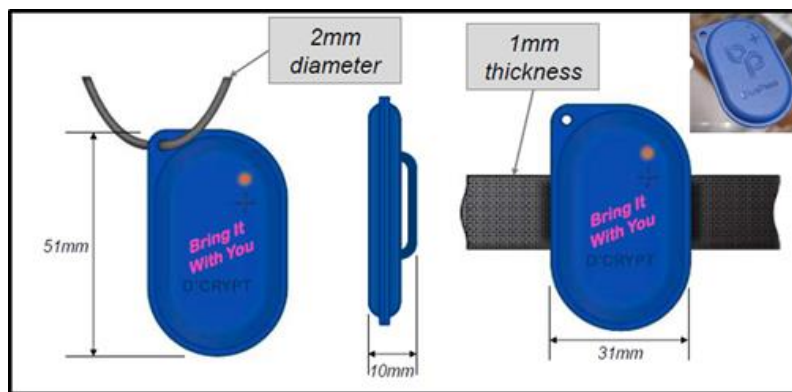


Figure 1: BluePass token

3. The process industry should take note that the current version of the BluePass tokens is not Intrinsically Safe (IS). Whilst having the workers wear the BluePass tokens at all times could enable swifter and more accurate contact tracing, thereby reducing the quarantine ring in the event of C+ cases, plant owners and their contractors must ensure that the use of BluePass tokens is in compliance with the process plant's prevailing health and safety requirements, similar to the use of mobile phones, which are not allowed in live plant environment.
4. Agencies are in discussions with the equipment vendor, D'Crypt, on potentially developing an IS-compliant version of the BluePass token that could be used in live process plant worksites. Should this be viable, more information on subsequent roll out of such a device will be made available in due course.

Issued by:

ECONOMIC DEVELOPMENT BOARD & ENTERPRISE SINGAPORE



¹This refers to all Work Permit and S-Pass holders in the Construction, Marine Shipyard and Process sectors. Other individuals, such as locals and Employment Pass holders, who work at these worksites and dormitories, will also be given the contact tracing devices.